

This guide is for experienced installers. Adherence to these procedures should result in a quality installation. Quadrant will not be responsible for poor workmanship, problems created by improper site conditions or installation, improper subfloors, improper applications, adhesives, varnishes and the use of maintenance products not recommended, or detectable defects verifiable prior to installation. Quadrant will be responsible, within the scope of the product specifications and warranties, for defective materials, but that does not include materials installed with defects identified prior to installation. If these instructions do not cover a particular site condition or if you require further information please contact Customer Services.

Pre-Installation

Care should be taken when handling boxes to avoid damage. When stored, boxes should be stacked flat & square, with no overhang, and stacks should not be so high that they become unstable or place undue pressure on the bottom boxes. Boxes should never be stacked on their side. Protect the flooring from extreme temperatures.

Boxes are individually labelled with Quality, Colour & Batch Number. Batches should not be mixed in the same area unless authorised by the specifier.

The product must be conditioned in its packaging in the area in which it is to be laid for a minimum of 48 hours before installation. The ambient temperature within the area during conditioning and installation should not exceed 26°C or fall below 18°C and Relative Humidity should be maintained between 40% and 70%. These conditions must be maintained throughout the installation and for a minimum of 48 hours after installation. Only remove outer packaging when ready to install the materials.

Refer to the individual Product Specification to check whether the product you are installing is suitable for use over underfloor heating systems. If it is the system should be switched off at least 72 hours prior to installation, and remain switched off throughout, and for 72 hours after, the installation. Subsequently the surface temperature should be gradually increased to operating temperature and should never exceed 28°C. Bear in mind that rugs placed on top of the flooring may act as heat accumulators increasing the surface temperature of the floor beyond the recommended limit.

clicBAC Planks should not be installed in permanent wet areas. They can be installed in areas where spillages frequently occur, however care must be taken to avoid liquids penetrating under the planks where they can create conditions for the growth of fungus and mould and cause the product to delaminate. To prevent this [Bona Traffic HD](#) polyurethane lacquer should be applied to floor to provide added protection and seal the joints.

clicBAC Planks are generally installed as floating floors, so the planks should not be fixed to the subfloor. Skirting boards should not be pressed down onto the planks thus restricting the movement of the floor. Provide 5mm expansion gaps to walls and other fixed objects. Skirting boards should cover a minimum of 7mm of the flooring.

CLIMATE+ COLLECTION: Transitions between separate rooms, asymmetrical floor areas greater than 325m² and areas with dimensions greater than 18m in any direction require additional expansion gaps. These requirements can be avoided if the products are glued down.

ESSENCE COLLECTION: Transitions between separate rooms, asymmetrical floor areas greater than 100m² and areas with dimensions greater than 10m in any direction require additional expansion gaps. These requirements can be avoided if the products are glued down.

clicBAC Planks can be glued down to avoid having to leave expansion gaps. Always follow the manufacturers recommended application methods when applying adhesives. Our recommended adhesive for clicBAC Planks is:

- [Wakol MS 260](#)

For each product we recommend specific laying patterns. The laying pattern represents the direction and stagger of the tiles or planks when installed. The specifier should select the preferred option from those recommended by Quadrant and advise the installers accordingly. The recommended laying pattern for our clicBAC Planks is Variable Drop (plank direction random, joints staggered).

Prior to beginning the installation all other trades should have their work completed and the area should be clear, clean and dust free.

Inspect the materials in daylight for any visible faults or damage and report any visible faults to Quadrant immediately and do not install the affected materials.

Shade variation is an inherent feature of cork flooring. Shuffle the planks before installation to achieve an attractive blend of shades.

Subfloor Preparation

Subfloors should be prepared in accordance with BS 5325 or corresponding national and European standards.

All traces of previous floorcoverings and adhesives must be completely removed to reveal the original subfloor. Only in limited cases where the existing flooring is solid and non-absorbent (for example ceramic tiles) can our flooring be installed over an existing floorcovering, subject to suitable preparation of the surface.

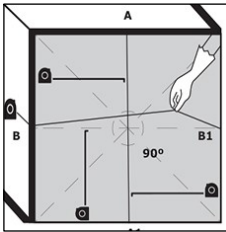
The subfloor must be level, clean, dry, smooth, crack-free and free from surface contaminants. The surface should be moisture-free. Subfloors that do not meet these criteria will require additional surface preparation to ensure a perfect installation.

Our modular products are suitable for installation directly onto raised access floors providing the panels are clean, smooth and dust free, and the panels are level and horizontally aligned. Any discrepancies in levels and any surface defects are likely to show through the flooring and prevent joints from settling properly.

Over wooden floorboards we recommend laying the planks crossways to the existing boards.

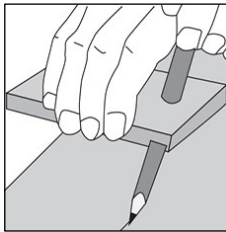
If the subfloor is not completely dry or moisture levels exceed 2% an insulation membrane is required. Use a polyurethane film with a minimum thickness of 0.2mm. On ground and basement subfloors we recommend 2 layers laid crossways for better protection. When laying PU film allow at least 200mm overlap of sheets and tape the joints. Turn the film 50mm up the walls and trim once skirting boards have been fixed.

Installation—Floating



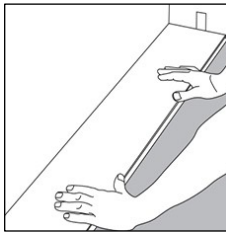
1. SETTING OUT

Measure the area to determine the size of cuts for the first and last rows. The planks in the first and last row must be at least 50mm wide. If necessary, the first row can be cut to a smaller size.



2. UNEVEN WALLS

To cut the first row against an uneven wall, scribe the shape of the wall onto the first row of planks and trim them accordingly. The first row of planks should be more than 50mm wide.



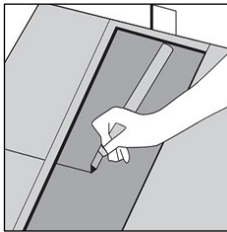
3. FIRST ROW

Start in the right hand corner of the area. Turn the tongue side of the plank to face the wall. Maintain an expansion gap of 5mm on the short side.



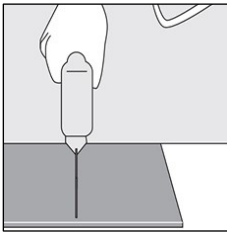
4. FIRST ROW

Hold the next plank against the first, and at an angle, and then fold it flat to the floor. Complete the first row in the same way.



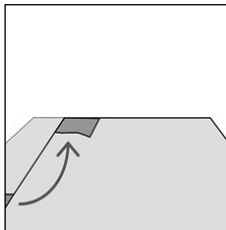
5. FIRST ROW

Cut the final plank of the first row to the correct length. Place the plank face down (short side without locking strip towards the wall). Allow a 5mm expansion gap.



6. FIRST ROW

Mark the plank where it is to be cut. Place it on a flat work surface and cut to size using a fine toothed jigsaw or hand saw.



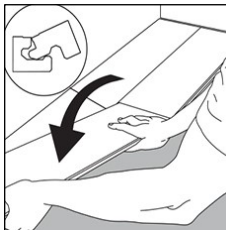
7. FILLING OUT

Use the cut piece from the previous row to start the next row, making sure it is at least 300mm long, if not start with a new board and cut it in half. Ensure that the end joints are staggered by at least 300mm.



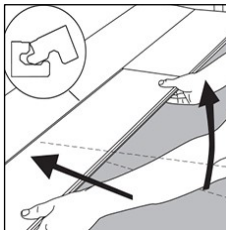
8. FILLING OUT

Place the first plank of the new row, with the tongue side at an angle, against the groove side of the plank in the previous row. Press forward and lay it flat at the same time.



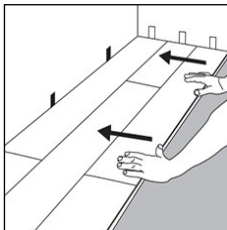
9. FILLING OUT

Place the short end of the next plank at an angle against the previously installed plank and fold it down. Ensure that the plank is positioned on the integral locking strip of the plank in the previous row.



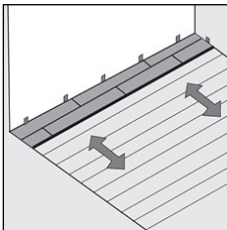
10. FILLING OUT

Lift up the plank (together with the previous ones in the same row), push it into the locking strip of the row in front, then press it down. This requires some gentle adjustments to the angle.



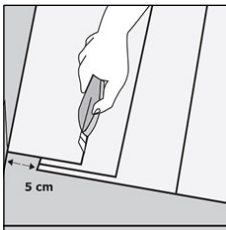
11. FILLING OUT

When three rows are complete adjust the distance to the wall to ensure there is a 5mm expansion gap.



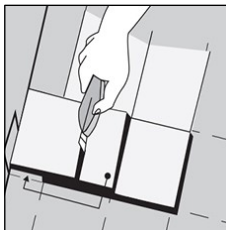
12. FILLING OUT

Proceed with the installation, repeating the previous instructions until reaching the opposite wall.



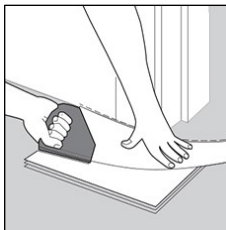
13. LAST ROW

Measure and cut the planks in the last row to the correct size. Allow for a 5mm expansion gap to the wall. The planks in the first and final row should be at least 50mm wide.



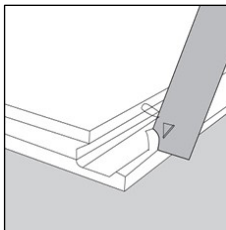
14. LAST ROW

Place the final plank on top of the previously installed one. Mark it (use an existing piece of plank with the locking strip removed). Allow for a 5mm expansion gap to the wall.



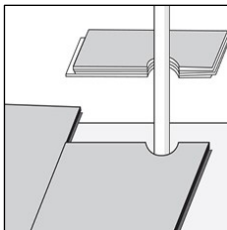
15. DOOR FRAMES

Use a piece of flooring to determine the correct height to cut the door frame. Cut the frame and architrave to the required height, allowing 2mm of clearance above the plank.



16. DOOR FRAMES

If you cannot angle the tile under the door frame or a low fitted radiator cut away the locking edge and apply PVA glue on the groove and slide the plank into position.



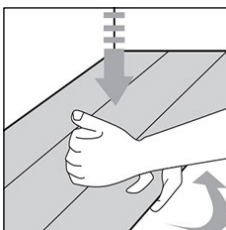
17. PIPEWORK

Drill the required holes in the planks, making the hole on the plank 10mm bigger than the pipe diameter.



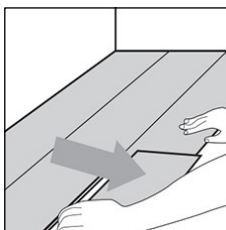
18. PIPEWORK

Cut the plank with a 45° angle towards the hole. The cut-off piece is glued into position again. Cover the hole with a pipe sleeve.



19. REMOVING THE FLOOR

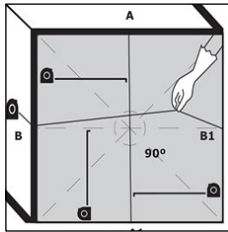
To uninstall the floor, lift the planks by a few centimetres on the long side, and then slide the planks out on the short side.



20. REMOVING THE FLOOR

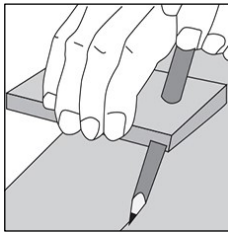
Do not bend connected planks backwards as this will damage the locking strip.

Installation—Glue Down



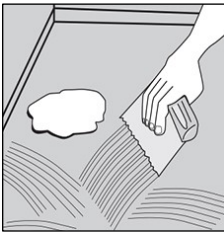
1. SETTING OUT

Measure the area to determine the size of cuts for the first and last rows. The planks in the first and last row should be at least 50mm wide. Generally start the installation in the right hand corner.



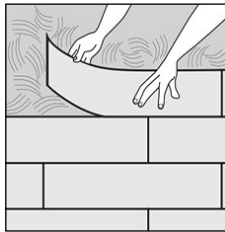
2. UNEVEN WALLS

If the starting wall is uneven, scribe the shape of the wall onto the first row of planks and trim them accordingly. The first row of planks should be more than 50mm wide.



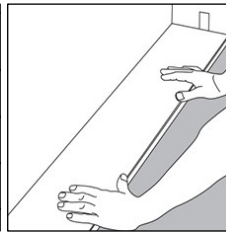
3. APPLYING ADHESIVE

Stir the adhesive before using to avoid adhesive lumps. Apply the adhesive evenly on the subfloor with the recommended notched trowel. Avoid pooling of the adhesive.



4. APPLYING ADHESIVE

Follow the recommendations of adhesive manufacturer. The backing of the tiles has to be moistened with the adhesive. In case of doubt, check by lifting it. When laying the tiles, use only manual pressure.



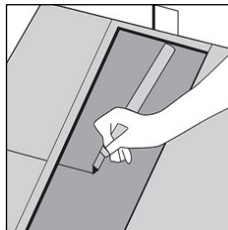
5. FIRST ROW

Start in the right hand corner of the area. Turn the tongue side of the plank to face the wall.



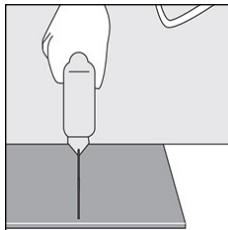
6. FIRST ROW

Hold the next plank against the first, and at an angle, and then fold it flat to the floor. Complete the first row in the same way.



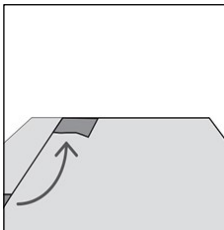
7. FIRST ROW

Cut the final plank of the first row to the correct length. Place the plank face down (short side without locking strip towards the wall).



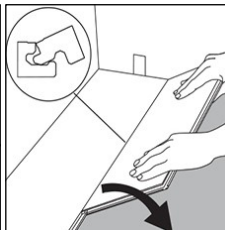
8. FIRST ROW

Mark the plank where it is to be cut. Place it on a flat work surface and cut to size using a fine toothed jigsaw or hand saw.



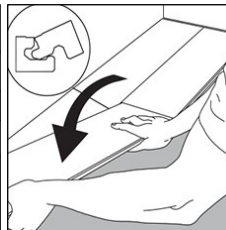
9. FILLING OUT

Use the cut piece from the previous row to start the next row, making sure it is at least 300mm long, if not start with a new board and cut it in half. Ensure that the end joints are staggered by at least 300mm.



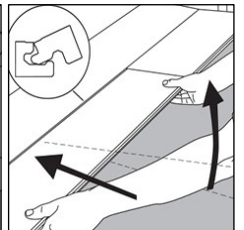
10. FILLING OUT

Place the first plank of the new row, with the tongue side at an angle, against the groove side of the plank in the previous row. Press forward and lay it flat at the same time.



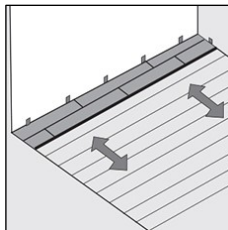
11. FILLING OUT

Place the short end of the next plank at an angle against the previously installed plank and fold it down. Ensure that the plank is positioned on the integral locking strip of the plank in the previous row.



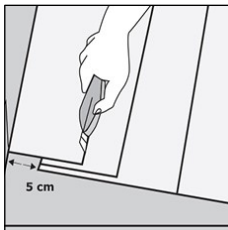
12. FILLING OUT

Lift up the plank (together with the previous ones in the same row), push it into the locking strip of the row in front, then press it down. This requires some gentle adjustments to the angle.



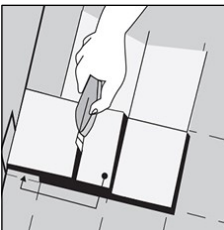
13. FILLING OUT

Proceed with the installation, repeating the previous instructions until reaching the opposite wall.



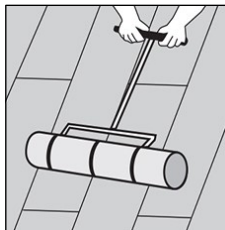
14. LAST ROW

Measure and cut the planks in the last row to the correct size. The planks in the first and final row should be at least 50mm wide.



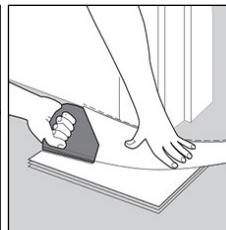
15. LAST ROW

Place the final plank on top of the previously installed one. Mark it (use an existing piece of plank with the locking strip removed).



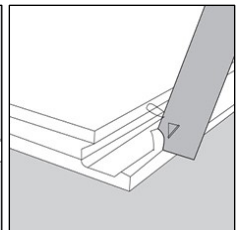
16. ROLLING

Throughout the installation (every 30 minutes) and on completion of the installation the floor should be rolled with a 50kg roller to ensure the planks are firmly bedded into the adhesive.



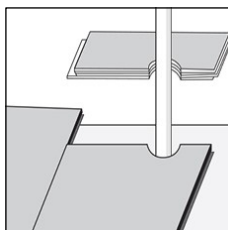
17. DOOR FRAMES

Use a piece of flooring to determine the correct height to cut the door frame. Cut the frame and architrave to the required height, allowing 2mm of clearance above the plank.



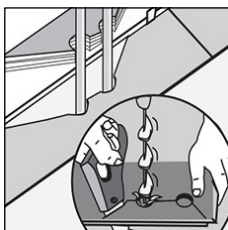
18. DOOR FRAMES

If you cannot angle the tile under the door frame or a low fitted radiator cut away the locking edge and apply PVA glue on the groove and slide the plank into position.



19. PIPEWORK

Drill the required holes in the planks, making the hole on the plank 10mm bigger than the pipe diameter.



20. PIPEWORK

Cut the plank with a 45° angle towards the hole. The cut-off piece is glued into position again. Cover the hole with a pipe sleeve.

Post-Installation

If glued down it is advised not to use the floor until the adhesive has fully cured. As a guide foot traffic and furniture movement should be avoided for 6 hours after completion. Do not drag heavy objects across your floor and always place some kind of protection between an object and the floor when performing movements.

Before using your flooring we recommend you vacuum and mop the entire area thoroughly to remove all dust and dirt.

Protect your flooring immediately after installation to avoid unnecessary damage by other trades.

The Health and Safety Executive advises the thermal environment of a workplace where the activity is light and mainly sedentary, should conform to the following criteria, tending towards the lower limits: an operative temperature of 20°C to 24°C during winter and 23°C to 26°C during summer. Levels of relative humidity in the range of 40 to 70% are recommended. At higher temperatures, the relative humidity should be at the lower end of this range.